



A STAIRE GARDENS

MOVE IN TO YOUR NEW HOME



SECURE



GREEN



INTELLIGENT



ASTAIRE GARDENS

An exquisitely landscaped sprawling township spanning 102 acres, off SPR on 60 Mtr. Road.

- Secure gated homes.
- Beautifully landscaped greens with over 2000 trees already planted.
- A smart & eco-sensitive township.

MONET FLOORS

The smart life residences, **NOW READY TO MOVE IN.**



SECURE



GREEN



INTELLIGENT



BLOCK-B

BLOCK ENTRANCE



ACTUAL SITE IMAGE



LOBBY



BLOCK-G

EXTERNAL FACADE



ACTUAL SITE IMAGE

CLUSTER ENTRANCE



ACTUAL SITE IMAGE

BASEMENT



ACTUAL SITE IMAGE

STREET VIEW

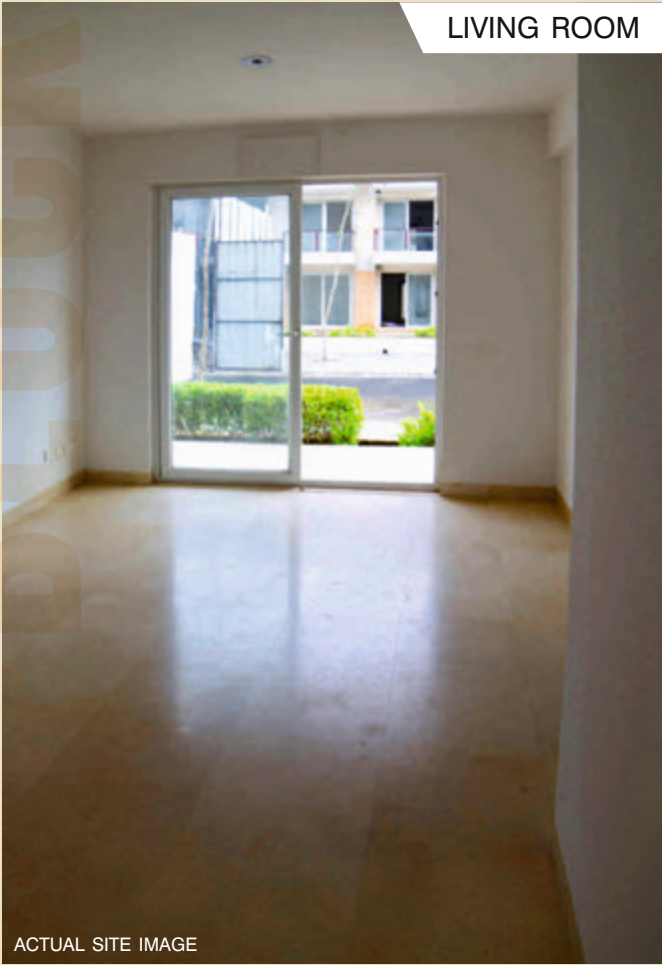


ACTUAL SITE IMAGE

BLOCK-E



LIVING ROOM



ACTUAL SITE IMAGE

PARK



ACTUAL SITE IMAGE

STREET VIEW



ACTUAL SITE IMAGE

CENTRAL PARK - JUST A WALK AWAY

A green haven located at the heart of the township -

- Beautifully Landscaped
- Manicured Gardens
- Seasonal Flower Beds
- Jogging Track
- Golf Putting Greens and much more.



ACTUAL SITE IMAGE

CENTRAL PARK



ACTUAL SITE IMAGE

BRIDGE



ACTUAL SITE IMAGE



PARK ARIAL VIEW

ACTUAL SITE IMAGE

SPORTS FACILITIES PROVIDED IN PARKS



BADMINTON COURT



TENNIS COURT



KIDS PLAY AREA



GOLF PUTTING GREENS



PARK ARIAL VIEW

ACTUAL SITE IMAGE

SPORTS FACILITIES

INTERIM CLUB

An interim club has been set up to provide for the initial occupants of the township it provides an array of facilities ranging from

- Gymnasium
- Table Tennis
- Pool Table
- Card Room
- Home Theatre Room
- Massage Rooms
- Restaurant
- Juice Bar Lounge
- Kids Play Area
- Play Station Room



PLUNGE POOL



KIDS PLAY AREA



HOME THEATRE ROOM



The Interim Club will be functional only for a period until the Sanctuary Club for Astaire Gardens becomes functional after which all the residents, who have availed club membership, can enjoy the facilities at the Sanctuary Club.



POOL TABLE

JUICE BAR LOUNGE



LOUNGE

TABLE TENNIS ROOM



THE GYM CLUB

COMMITMENTS AND BEYOND

Our aim is to deliver more than just your homes. Some of our initiatives go beyond our commitments.

ENHANCED SECURITY:



VIDEO DOOR PHONES, BY GODREJ, shall be provided in each apartment as an additional security measure.



All Entry/Exit points of township shall be manned round the clock. **A NETWORK OF CCTV CAMERAS HAS BEEN SET UP ACROSS THE TOWNSHIP** (about 125 IP Cameras with 80 meter night vision) the feed from each of these cameras shall be stored and will be available for 30 days at the central security center.



DEDICATED PATROL VEHICLE has been allotted for the township to provide immediate assistance & enhanced security.



A COMPOUND BOUNDARY WALL has been constructed all around township so as to provide a secure and safe environment for the residents.



SHUTTLE SERVICES – A dedicated scheduled shuttle services to provide easy connectivity from Astaire Gardens to SPR



ELECTRONICALLY OPERATED MAIN GATES – MS Gates will be operated through an imported electric motor system.



On demand **SECURITY ESCORT SERVICES** on motor bikes for residents moving out of the township from 9pm till 5am till SPR.



COMMITMENTS AND BEYOND



DIGITALLY YOURS:

- **MULTIPLE WI-FI ENABLED ZONES** have been created across the township at various locations.
- **FIBER OPTIC CABLE, BY SOUL MICRON TECHSERVE LLP**, network is already in place throughout the township to support plug and play for various facilities:
 - Intercom - IP based intercom facility throughout the township.
 - Telephone Services - Reliance/Tata/Bharti/BSNL/Vodafone (any one service provider)
 - Cable TV – Den/Hathway/Citi Cable (any one service provider)
 - Internet – Reliance/Tata/Bharti (any one service provider)

RESPONSIBILITIES TOWARDS ENVIRONMENT:

- **LED LIGHT FIXTURES** have been used extensively in common areas within the buildings throughout the township in an effort to conserve energy.
- **DRIP IRRIGATION OR MICRO-IRRIGATION** has been done to save water. In this process water drips slowly to the roots of plants, either from above the soil surface or below the surface. In this system we distribute water through a network of valves, pipes, tubing, and emitters.
- Sprinklers have been used to irrigate landscapes areas so as to maximize water savings. **THIS SYSTEM ALSO CONTROLS DUST.**



All the facilities being provided at the Interim Club shall be chargeable at the rates to be determined by the designated maintenance agency. All other services mentioned in this communication shall be chargeable and are provided by third party vendors as the case maybe.

COMMITMENTS AND BEYOND

EFFICIENT DISPOSAL:

- **DOOR TO DOOR GARBAGE COLLECTION FACILITY** – Door to door garbage collection service would be provided and collected trash/garbage would be disposed off at suitable places designated by municipal authority.
- **GARBAGE SEGREGATION AT SOURCE WOULD BE IMPLEMENTED** – Residents would be educated and encouraged to separate dry and wet garbage for better disposal.
- **A SEPARATE HOUSEKEEPING AGENCY** has been hired for cleaning common areas in township on regular basis.
- **SEPARATE PET AREA** has been created in township for pet lovers.



ACTUAL SITE IMAGE

COMMITMENTS AND BEYOND

COMMITMENTS AND BEYOND

ROADS & COMMON AREAS:

- An aesthetic mix of blacktop roads integrated with concert paver in earthen tones.
- Paver patterns have been intelligently created to break the monotony of the conventional black top roads.
- Zebra/pedestrian crossings, plot entries & road junctions have been highlighted in different patterns and form part of the roads themselves.
- Paved pathways provided for pedestrian walking are extensively shaded.
- Layered greens have been provided along roads.
- Special care has been taken to ensure adequate lighting of common areas.
- Street lighting has been designed to have maximum coverage to enhance the security and the aesthetic appeal of the township.



ACTUAL SITE IMAGE



ACTUAL SITE IMAGE

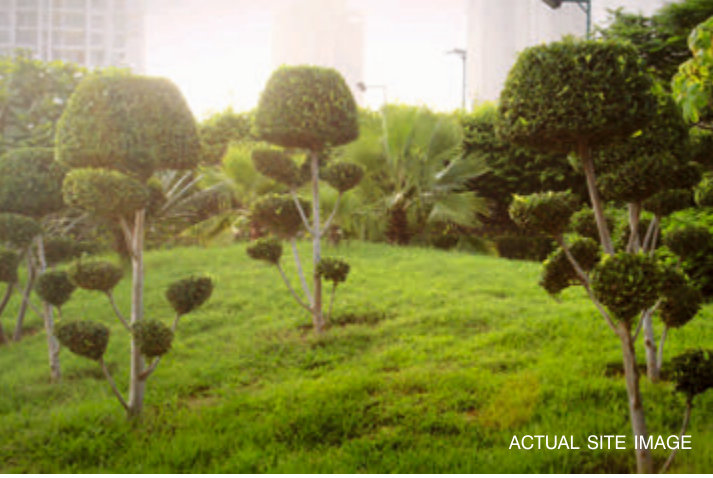
SIGNAGES:

The entire township has been equipped with aesthetically designed directional signages, in keeping with the theme of the township, outfitted with LED lighting.



ACTUAL SITE IMAGE

COMMITMENTS AND BEYOND



ACTUAL SITE IMAGE



ACTUAL SITE IMAGE



ACTUAL SITE IMAGE



ACTUAL SITE IMAGE



ACTUAL SITE IMAGE



ACTUAL SITE IMAGE

astaire
gardens

by



Regd Office: M-11, Middle Circle, Connaught Circus, New Delhi - 110001
Tel.: +91-124-385-2787, Fax: +91-124-385-2999,
Email: customercare@bptp.com, Website: www.bptp.com, CIN - U45201DL2003PLC121733

Project funded by:

IndusInd Bank